

FUTURE

Tomorrow starts today



CREATIONS | VIVIDVIEW

GLASS MADE GORGEOUS

www.faglass.com



VIVIDVIEW

Mesh In-filled Glass

Embellishments on glass have seldom worked because they usually came at the cost of functionality. While patterns on glass would obstruct visibility, plain glass often lacked the pizzazz needed to liven up facades or interiors.

However, with Future Glass **VIVIDVIEW**, you can now enjoy a truly distinguished look without compromising on the inherent functionality of glass. **VIVIDVIEW**'s innovative design integrates metallic mesh patterns into insulated glass units to deliver an undisputed statement of style and panache. Available in three options of Sefar® - Vision fabric mesh, Expanded metal mesh and Woven wire mesh, **VIVIDVIEW** gives architects and interior designers more options than ever before.



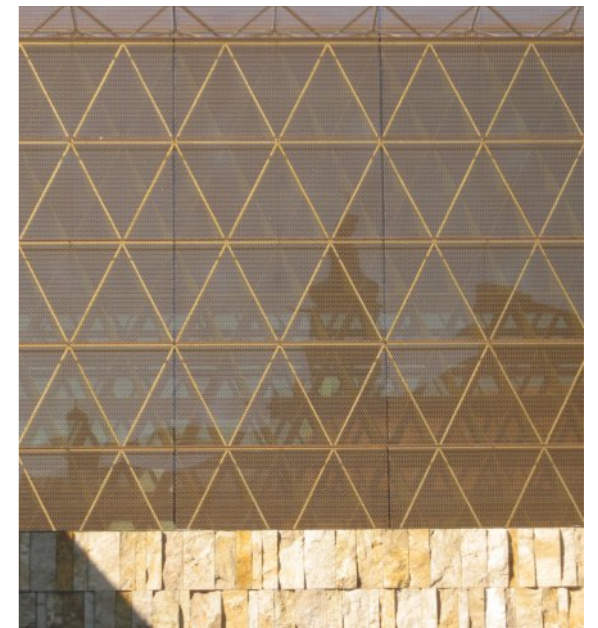
Glass with unmatched aesthetics and glare control

Advantages of **VIVIDVIEW**



Adds Glamour

VIVIDVIEW's gleaming metallic finish adds an unmistakable touch of class with its soothing glow in bright daylight. Besides lending a regal aura to a facade or interior panel, **VIVIDVIEW**'s metallic character carries a sense of strength and robustness that beautifully complements its evolved design sensibilities. With all manners of patterns possible, **VIVIDVIEW** undoubtedly boosts any structure's glamour quotient.



Privacy with a View

Asymmetric mesh patterns and perforations deflect the light to make viewing from the outside difficult. In doing so, **VIVIDVIEW** improves privacy while reducing the impact of direct, harsh sunlight. Better still, its proprietary design ensures that visibility from inside remains unrestricted. So we bring to you excellent views with enhanced privacy, best of both worlds!

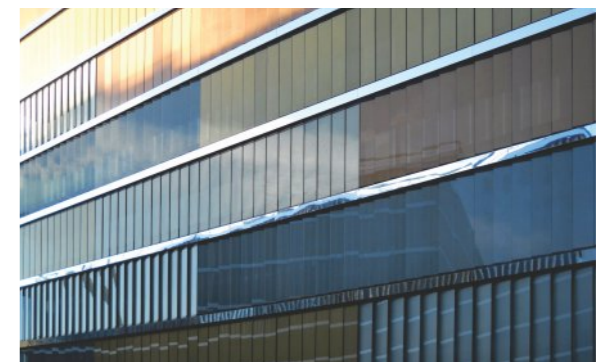


Glare Control + Shading

VIVIDVIEW improves Solar Heat Gain Coefficient (SHGC), which helps to reduce the heat coming through the glass panels. This decreases cooling requirements, which in turn minimizes energy costs. The mesh structure acts as mini-louvers, filtering the light passing through and selectively dispersing it to reduce glare. Further, with the mesh hermetically sealed in a double-glazed glass cavity, there is no need to invest further in cleaning and maintenance of the mesh.

Bespoke Facade

These unique decorative glass products can be customized to create patterns using various type of materials (Sefar®, Expanded metal or Wire mesh) to deliver a signature finish. **VIVIDVIEW** can also suit almost any requirement as it can be produced with a wide range of glass glazings (low iron, tinted, tempered, heat-strengthened, laminated, curved, fire-rated and more). It can also be combined with solar control, low-E and heat reflective coatings to deliver the perfect solution for your needs.

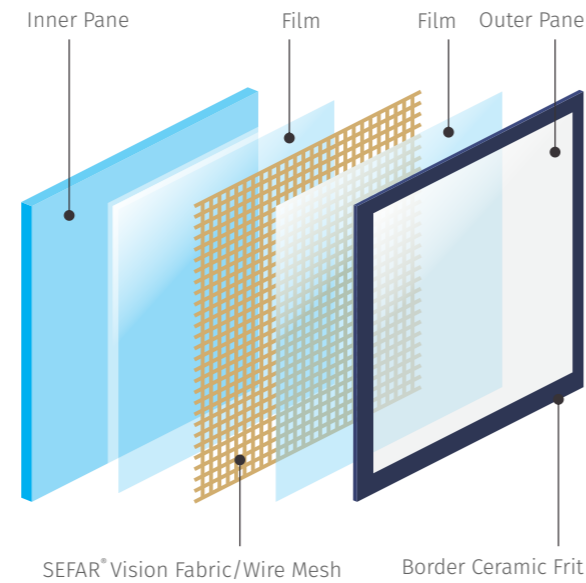


How It Works

VIVIDVIEW is a versatile product line that can incorporate a variety of mesh types - Sefar® Vision Fabric Mesh, Woven Wire Mesh or Expanded Metal Mesh. Each material brings its unique characteristics to the advantage of **VIVIDVIEW** product line.

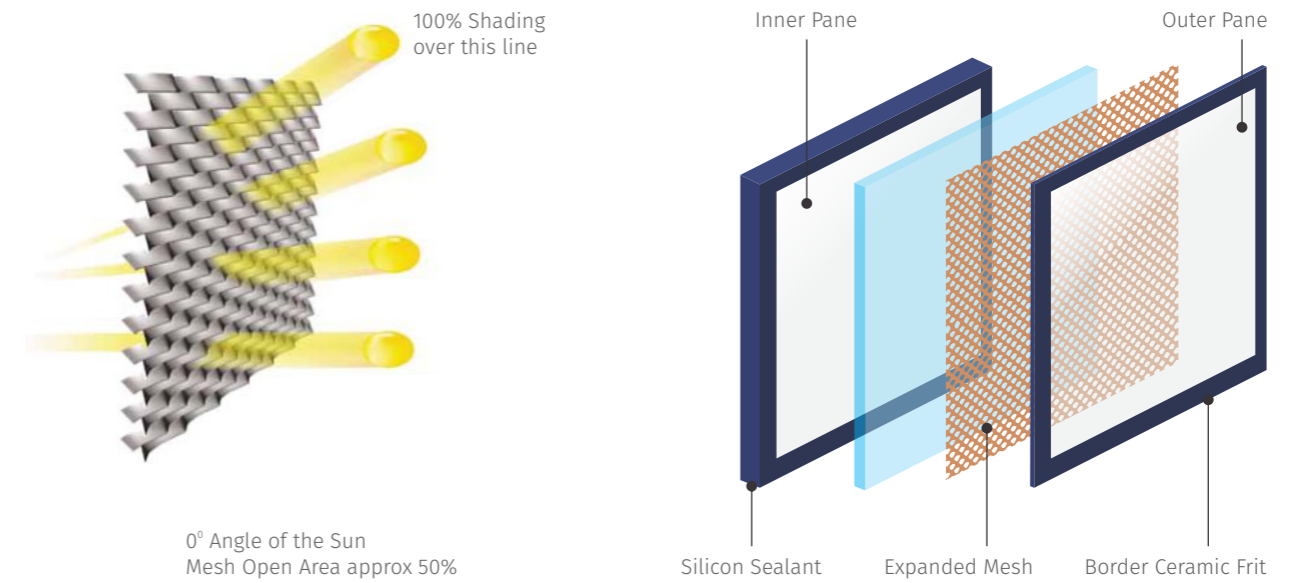
VIVIDVIEW Vision Mesh consists of a metal-coated precision fabric interlayer laminated between two panes of glass forming an inseparable bond. The laminated product may be used standalone or encapsulated inside an Insulated Glass Unit (IGU) to enhance the performance parameters of the end product.

Each fabric features weaves in a variety of aperture percentages (25-70%) and light transmission percentages (18-60%). The yarn thickness is close to 260 microns, about the thickness of human hair making it practically invisible when viewed from a distance of 3 metres. The structure of the fabric is responsible for the unique optical effects, subtle reflection and solar reduction.

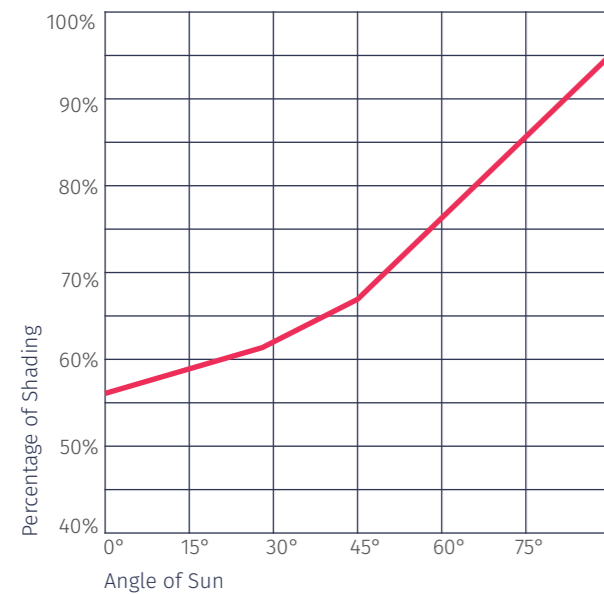


VIVIDVIEW Expanded Mesh is produced using a special technique of suspending the metal mesh inside the cavity of an IGU. Better U-values can be achieved by incorporating a Low-E coated glass inside the IGU. The mesh structure, which is designed to be directionally selective when light passes through, helps in controlling glare and reducing Solar Heat Gain through the facade.

VIVIDVIEW Expanded Mesh works as a sunscreen and can achieve up to 100% shading if the long diagonal of the mesh is parallel to the ground.



VIVIDVIEW's gleaming metallic finish adds an unmistakable touch of class with its soothing glow in bright daylight



VIVIDVIEW Wire Mesh incorporates a textile-like metal structure laminated between glass panes and encapsulated in an IGU to achieve performance metrics. The wire mesh is subtle and adaptable, yet at the same time durable and robust. One moment a transparent membrane, the next is a solid wall reflecting the lights and colours of its surroundings. Varying mesh densities within the elements allows precise control of the degree of shade.

VIVIDVIEW Wire Mesh product line gives you unhindered views looking out while it guides and filters natural daylight in a differentiated way into the room. This chart explains how the shading increases as the sun's inclination angle increases on an expanded mesh with open area of about 50%.

Why Choose **VIVIDVIEW**

- Enhances privacy
- Renders clear, undistorted views
- Reduces glare
- Customizable product range
- Controls flow of heat
- Easy to clean and maintain

1 HARBOUR CENTRAL

London, United Kingdom

Where Luxury Meets Quality



Client: Galliard Homes
Architect: Rolfe Judd
Façade Consultant: Meinhardt Facades
Product: 13.52 Clear LowE HS with Black Border frit + 24mm Black Spacer (Argon) with Expanded Metal Mesh + 6mm Clear HS
Quantity: 4100 sqm

- The panels for the Harbour Central project had to be created keeping the most exacting international standards in mind. This made creating large panels that included a metal mesh with minimal sagging and distortion extremely difficult.
- Our search for the perfect gold and silver mesh took us as far as Germany and Italy, but despite sourcing products from various countries, we were able to achieve the project's strict timelines.
- To ensure zero breakage during delivery, our logistics and delivery team took every precaution that was necessary while upholding the strictest European quality standards.

2 CITY WALK

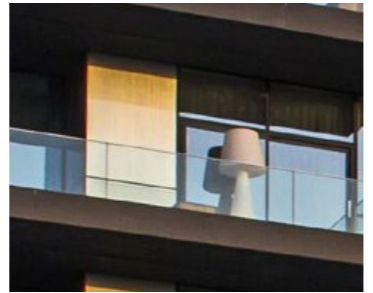
Sheikh Zayed Road, Dubai

Capturing the Heart of Dubai



Developer Name: Meraas
Architect: Benoy
Main Contractor: Al Shafar General Contracting (ASGC)
Sub-Contractor: Al Abbar Aluminium
Processor: Future Architectural Glass
Quantity: 4,000 sq. metres
Product: VIVIDVIEW (vision panel using Sefar AL 260/25, metal-coated fabric mesh with Sunguard Neutral Low E)
Processes Involved: Lamination, Insulation, Heat Treatment

City Walk has become a city hotspot throbbing with energy. Despite the predominantly hot weather and the open-air restaurants and walkways, people can be seen milling about the area through the day, enjoying the beauty of the architectural marvels all around. The VIVIDVIEW panels offer one-sided vision, providing residents with unparalleled views of the surrounding area, while also giving them the privacy they deserve. Additionally, the three-dimensional panels help bring the structure to life. The use of special glass panels with metallic lustre allowed us to create a façade that reflected the surrounding areas while enveloping the entire space in a majestic glow.



3 BVLGARI HOTEL

Jumeirah, Dubai

Luxury Hospitality Gets a New Address



Developer: Meraas
Architect: Antonio Citterio Patricia Viel and Partners
Façade Consultant: Fondue Consultants
Main Contractor: Al Jaber Engineering and Consultants
Product: VIVIDVIEW (15mm low iron laminate with GKD Mandarin wire mesh)
Quantity: 1600 sqm

- With the VIVIDVIEW panels, we were able to achieve the perfect coral and sand colours and textures as outlined by the customer.
- By processing the large panels at our in-house automated facility, we were able to check the quality of each panel before sending it to the site.
- This enabled us to achieve zero on-site rejections for the project. Since the glass we chose was laminated, it offered the highest levels of safety, security and privacy while significantly reducing ambient noise, ensuring that every room on the hotel's property is as tranquil and serene as the azure sea that surrounds the island.



4 THE OVAL ROOM, HYATT REGENCY

New Delhi, India

When Two Worlds Collide

Developer: Asian Hotels (North) limited
Architect: CR Narayana Rao
Façade Consultant: Meinhardt Facades
Product: 13.52 PPG Starphire™ Low-Iron Glass HS with GKD Mandarin mesh +16mm Bronze oxidized spacer + 8mm low-E HS Mesh: GKD Mandarin Mesh | Interlayer: DuPont™ SentryGlas
Quantity: 2200 sqm



- The Oval room stands as the country's largest metal-incorporated glass facade but there's more to these glasses than their spectacular appearance - they effectively diffuse sunlight and provide a massive reduction in solar heat gain. These are two inherently important but often overlooked requirements in such free-standing structures.
- Spread over 1,400 square meters, it is an opulent pillar-free space that can accommodate up to 1,000 guests with an open kitchen setup. The high ceiling is adorned with contemporary fibre-optic chandeliers and mood lighting. But perhaps the jewel in its crown are the 3.8 metre tall glass panels embellished with a bronze mesh that serve as the highlight, flooding the hall with natural sunlight while reducing glare by over 65%.



Bespoke Designs for Seamless Effects

As a complete solution provider, Future Glazing understands the need to provide systems that integrate the architect's vision seamlessly into the facade. Upholding the architectural concept, Future Glazing can assist in designing the glazing framework to complement the overall aesthetics. This can be challenging due to the different types of performance requirements such as structural, expansion joints, waterproofing and so on. Future Glazing, with its diverse expertise can safeguard the design goal and deliver a bespoke facade in its true sense.

We have an expert in-house design team that has several years experience in executing complicated facades and glazing projects. This gives us a strategic edge over our competitors when it comes to providing glass under our Creations vertical. Since we are able to give end-to-end solutions for your innovative design needs it becomes both convenient and faster for you to use our products in your projects, knowing that all your architectural and structural requirements will be taken care of under a single banner.

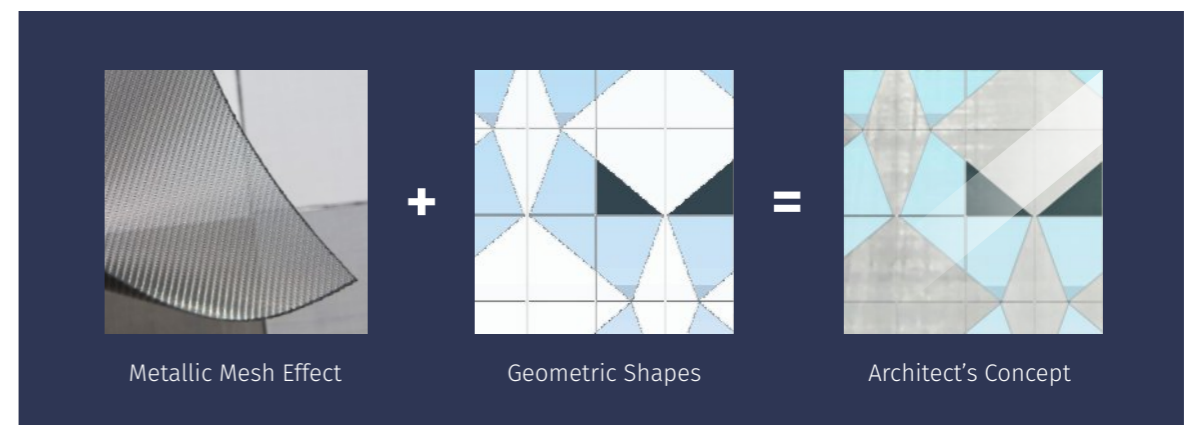
So come and challenge us - we are looking forward to being your complete facade partner!

A Typical Project Case Study



Design

The architect's vision is to have a metal mesh finished facade with various geometrical shapes in the structure rather than customary rectangle panels. The architect's renders show a facade having a seamless integration of the geometrically shaped metal mesh panels matching the grid lines exactly.

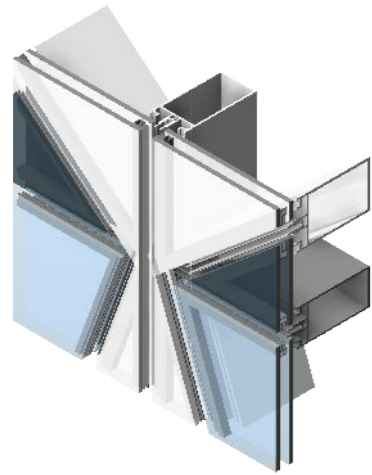


Action Steps

- Rendering to match the architect's design intent
- Recommendation to choose **VIVIDVIEW** technology to achieve metal mesh effect in glass
- Propose seamless system custom designed to suit original pattern

Develop

Future Glazing team engages its design experts to customize a bespoke system that suits the shaped glass panels. Brainstorming innovative ideas results in designing a framework that perfectly matches the shaped metal mesh finish glasses. After in-depth cost-benefit analysis the best solution is selected and worked on.



Action Steps

- Structural analysis to ensure stability
- Design to meet the performance requirement
- Choice of system color to compliment the design

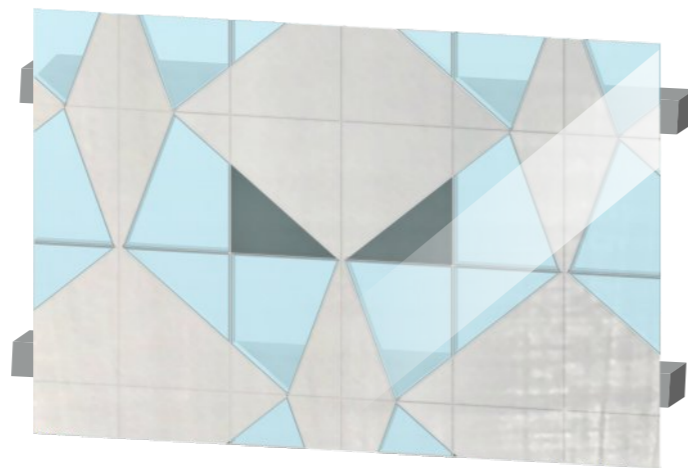


Deliver

Installation is done using compatible materials that match the glass specifications. Future Glazing provides a turnkey solution from design till installation. Since all the designing, processing, fabrication and installation are covered under one roof, quality is maintained and we can provide a comprehensive package. With us, you are in safe hands to create a bespoke facade with great style and panache.

Action Steps

- Joint plumb to match the pattern
- Shorter lead time
- Technical expertise are locally available



Who We Are

Future Architectural Glass, LLC (Future Glass) is a joint venture between a multinational and diversified Singapore corporation and a leading Indian glass conglomerate. The company has established itself as UAE's premium glass processor having the entire gamut of European machinery and systems to process any type of interior and exterior glass.

Since 1976, the group has been serving the needs of architectural glass market by providing latest products suiting the dynamic needs of architects/consultants. We started operations as a glass trading and distribution firm and ever since have expanded our products and services to include safety glass manufacturing and providing specialty glass solutions.

In the last four decades, we have diversified into several product lines encompassing exciting exteriors glazing products, comfortable interior

glazing, specialty design applications and high performance green building product solutions.

Our specialized products development unit, is dedicated to understand the changing needs of the architectural glass market and introduce innovative glass and glazing solutions for enhanced comfort, safety and performance. Spread over more than 30 countries worldwide, our strong client base is an indicator of our global reach and the trust we share with our customers.

Our ever-expanding presence with offices in UAE, India and Singapore helps us serve the varied needs of client promptly and efficiently. With multiple manufacturing bases in UAE and India, we are able to optimize resources and utilize the location advantage to the benefits of our global clientele.



Key Indicators



5

Million panels delivered worldwide

2

Manufacturing base – UAE and India

3

Regional headquarters – UAE, India, Singapore

4+

Decades Group's experience in Glass

35+

Countries exports worldwide

1000

Employees group strength

500,000

Sq.ft. area of Factory space

FUTURE

Tomorrow starts today



FUTURE

Other Creation Products:

DIGIVIEW

Digitally printed glass

SPECTROVIEW

Colour laminated glass

SWITCHVIEW

Smart privacy glass

MEDIAVIEW

Digital media glass

ONYXVIEW

Stone laminated glass

SOLERA

Real daylighting solution

DYNAMICVIEW

Intelligent solar control

VISIONCONTROL

Glass with integrated blind and louvers

SOLARVIEW

Photovoltaic glass

CHROMVIEW

Mirror frit glass

OFFICE

2411 Churchill Tower, Business Bay, PO Box 117259, Dubai

☎ +971 4 346 1279 | ✉ sales@faglass.com

WORKS

P278 Al Ghail Industrial Area, Ras Al Khaimah (UAE), PO Box 86001

☎ +971 7 258 9274 | 🖨 +971 7 258 9071

www.faglass.com



  /faglass