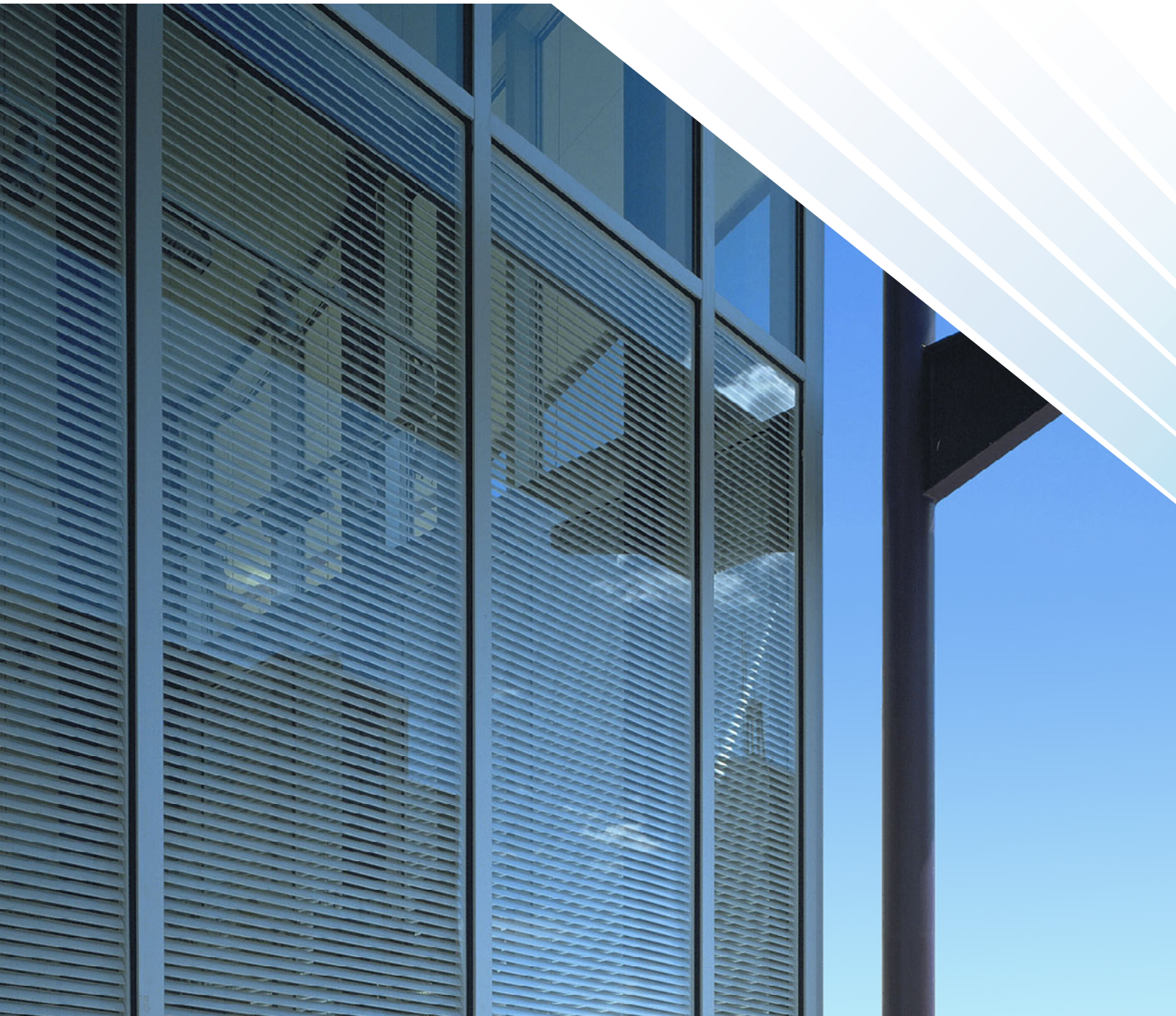


The future of vision & daylight control



INSULATING GLASS WITH INTEGRATED CORD-FREE LOUVERS



FOR THE OPTIMAL CONTROL OF VISION, DAYLIGHT, HEAT, SOUND



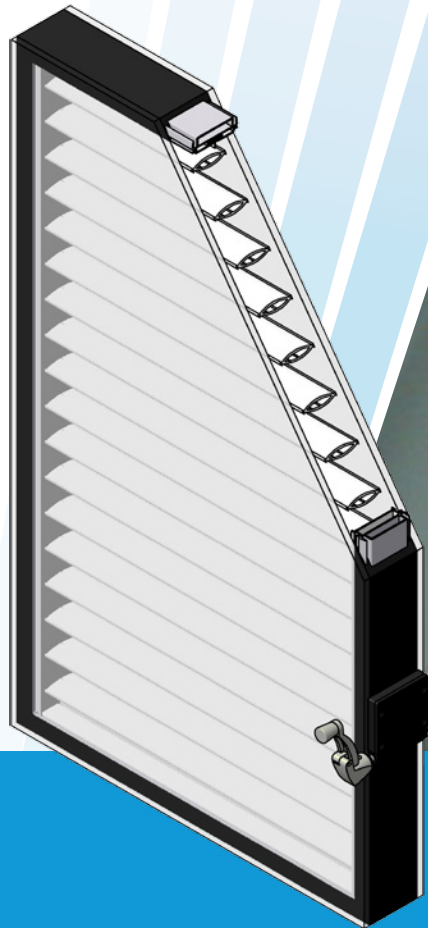
INSULATING GLASS WITH INTEGRATED CORD-FREE LOUVERS

Vision Control® is a patented, hermetically sealed glass unit combining louvers within glass that can be customized to virtually any shape for interior and exterior glazing applications.

Its advanced louvered glazing technology eliminates strings and cords, ensures alignment, requires no maintenance and provides the ideal daylighting or privacy solution for commercial, residential, educational, healthcare or institutional environments.

When installed in exterior applications, Vision Control® significantly reduces energy consumption in support of LEED® requirements.

Vision Control® is a winner of *The Architects' Choice Award* from the National Symposium on Healthcare Design and a *Product Innovation Award* from Architectural Products Magazine.



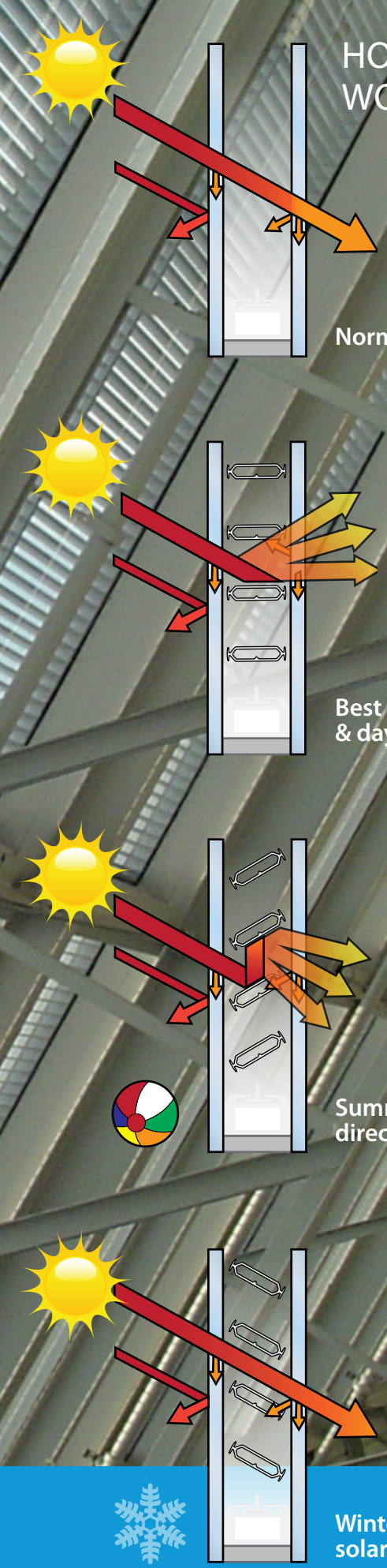
HOW DO THEY WORK?

Normal

Best view to exterior & daylighting

Summer: Cut off direct sunrays

Winter: Maximize solar heat gain



FEATURES

Total privacy

Completely adjustable privacy and visibility levels.

Adjustable lighting

Tilt louvers to achieve desired lighting levels.

Dust-free

Hermetically sealed for improved hygiene and reduced risk for allergies.

No maintenance

Reduced cleaning and replacement costs.

Tranquility

Sound wave barriers and 2"(50.8mm) or 2 1/2"(63.5mm) airspace thickness between glass panes help reduce noise.

Safety

Attack-resistant glazing and adaptable anti-ligature operators offer enhanced protection.

Esthetic appeal

Perfectly aligned louvers enhance any design approach.

Multi-purpose applications

Eliminates the need for curtains, shades or any type of blinds for swing doors, sliding doors, sidelights, windows, interior partitions, skylights and curtain walls.

Daylighting design

Blocks unwanted glare, heat and harmful UV rays while maximizing entry of light further into the space to reduce the need for artificial lighting.

LEED® certification

Solar heat barriers ensure optimal thermal performance to reduce HVAC costs and energy consumption.

Superior quality

All components are built to last.

Customizability

Custom-manufactured with any glazing type (tempered, heat-strengthened, tinted, laminated, wired, polycarbonate, leaded, glass-clad polycarbonate, fire-rated and more).

Cord and string-free design

Eliminates alignment issues and the gradual wear and tear of strings associated with traditional blinds.

Flexibility

Various airspaces - 1"(25.4mm), 1 1/4"(31.7mm), 2"(50.8mm), 2 1/2"(63.5mm) - and shapes (rectangular, trapezoidal, semi-circular) for adaptability in vertical and sloped conditions.

Curtain wall adapter

A laboratory-tested aluminum adapter profile for exterior applications seamlessly transitions required thicknesses of Vision Control® into standard 1" curtain wall glass pockets without the need for modification.

"I was very impressed with the entire Unicel operation - from the professional appearance of the staff, to the factory floor, the workers and, of course, the quality of the product."

Frank Pena,
Frank Pena & Associates



CONTROL OPTIONS

Thumbwheel

High-speed, self-reversing, suitable for limited spaces and accessible from one or both sides (available in black PVC or painted aluminum).

Crank Handle

NEW faster and easy to use, self-reversing, removable metal crank with one or two sided operation. Suitable for all applications (available in white or gray).

Aluminum Knob

NEW faster-to-operate, self-reversing knob, one or two sided operation, ideal for sliding doors where space is limited.

Anti-ligature Knob

NEW faster-to-operate, self-reversing cone-shaped knob, one or two sided operation, ideal for mental health facilities (available in white, gray, or black PVC).

Electrical

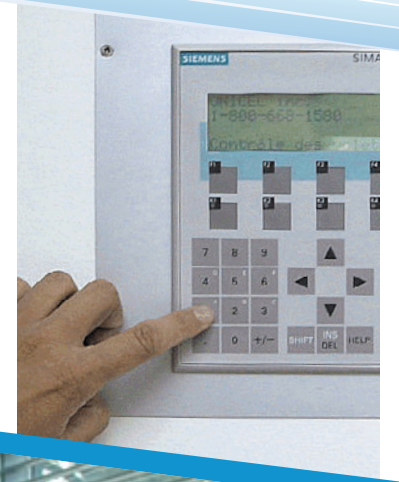
Speedy, precise, remote controllable with timer/sun sensor options. Ideal for multiple panel and out-of-reach installations.

PLC Computerized System

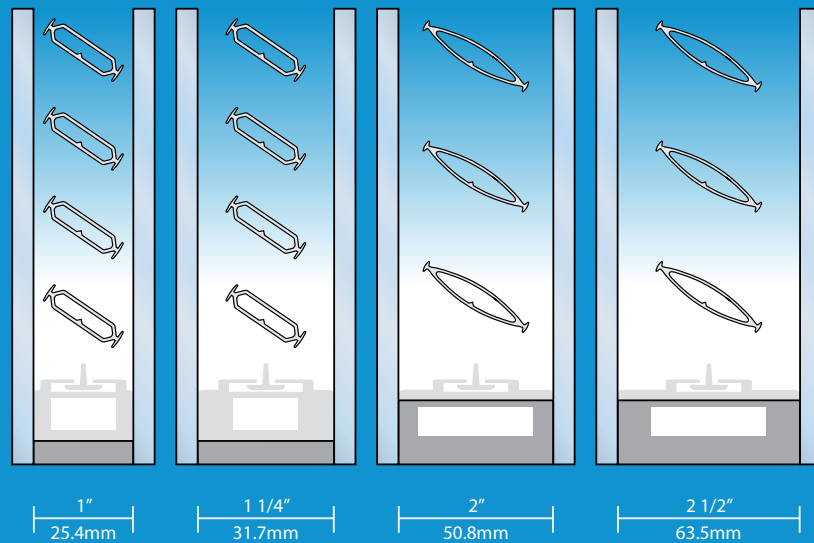
Programmable, highly accurate, timer/sun sensor options, ideal for large scale projects and intelligent buildings. Can be connected to building automation systems (BAS).

"It was a joy to work with the professionals at Unicel from concept design to building completion. The Unicel installation exceeds our expectations of maximizing daylight, while minimizing glare, heat loss and heat gain."

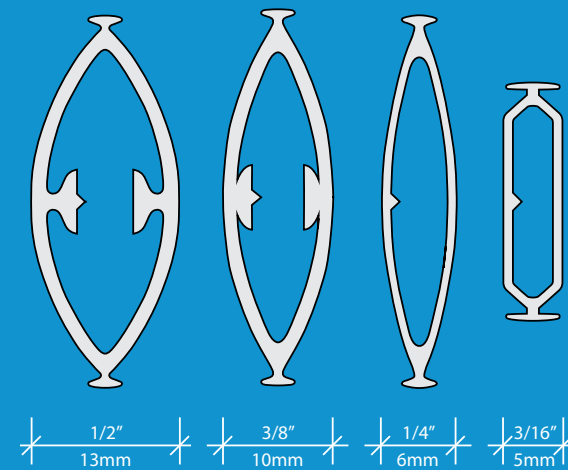
**Richard Malm,
Lewis & Malm Architecture**



SPACER OPTIONS FOR A WIDE RANGE OF INTERIOR AND EXTERIOR APPLICATIONS



LOUVER SHAPES AND SIZES TO SUIT ANY APPLICATION





VISION CONTROL® WITH PILKINGTON PYROSTOP® GLAZING

A UL-listed solution that combines Vision Control® integrated cord-free louvers and Pilkington Pyrostop® fire-rated glazing from Technical Glass Products meets a longstanding need for fire-rated louvered systems in healthcare and other environments. This hermetically sealed system with fire retardant capabilities provides unprecedented privacy control

with fire-ratings of 45, 60 and 90 minutes for doors, windows, transoms and sidelights.



NEW - Fire-rated trims offer specialized steel trims for doors provide 20-minute fire protection with the use of Firelite Plus® glazing by Technical Glass Product



FOR THE MOST DISCERNING
ARCHITECTURAL PROJECTS



Vision Control® contributes to Grand Rapids Art Museum LEED® certification – the first “green” museum in the US.



Vision Control® ensures the required u-values to help Morgan State University's new Center for the Built Environment and Infrastructure Studies (CBEIS) achieve LEED® Gold Certification.

Vision Control® integrated cord-free louvers are ideal for sustainable design projects:

- Reduce energy consumption
- Maximize natural light benefits
- Control solar heat gain

Vision Control® delivers LEED® certification credits:

EA Credit 1	Optimize energy performance (1-19 points)
IEQ Credit 7.1	Thermal comfort – Design
IEQ Credit 8.1	Daylight and View – Daylight
IEQ Credit 8.2	Daylight and View – Views
ID Credit	Intelligent control of louver tilt angle is used for controlling solar heat gain and enhancing daylighting.

NEW - Argon in airspace

Vision Control® units with argon-filled airspaces maximize thermal performance by reducing conductive and convective heat transfers when louvers are in open position.

“The quality of the product is the best I have seen on the market. The material is heavy duty, and the operation of the blinds is very smooth and precise.”

Emory Lukacs,
Project Manager, D-M Products Inc.





ABOUT UNICEL ARCHITECTURAL

For 50 years, Unicel Architectural has built a reputation for the most advanced aluminum and glass solutions. These solutions encompass louvered glazing, skylights and more, to enhance major global construction initiatives with utmost quality and reliability. With its proprietary technology, Unicel's Vision Control® delivers unprecedented comfort and control of vision, light, temperature and sound with a patented combination of louvers between glass that are hermetically sealed and cordless. Unicel's solutions are guaranteed for longevity, optimized for energy efficiency, and customizable to any design, environmental or cultural requirements. Unicel combines its market leading know-how with great design to ensure optimal aesthetics and sustainable performance.

THE CREATORS OF



Insulating Glass with Integrated Cord-free Louvers



WINNER
OF THE ARCHITECTS'
CHOICE AWARD
AT THE
NATIONAL SYMPOSIUM
ON HEALTHCARE
DESIGN

