

Content

Overview systems	4 – 5
ROKU® System AWM II	6 – 7
ROKU® System AWM II KS	8 – 9
ROKU® System AWM II Light	10 – 11
ROKU® System EC Endless Collar	12 – 13
ROKU® System IWM III plus	14 – 15
ROKU® System MFS Combined Penetration Seal	16 – 17
ROKU® System FPP Fire Protection Pillows	18 – 19
ROKU® System FPB Fire Protection Bricks	20 – 21
ROKU® System FP Plugs	22 – 23
Supplied form	24 – 26



TYPE OF PRODUCT	COLLARS				WRAP
SYSTEMS					
ROKU® SYSTEM	AWM II	AWM II KS	AWM II Light (AWM III)	EC Endless Collar	IWM III plus
FIRE RESISTANCE RATING	EI 90 / 120 / 240	EI 90 / 120	EI 90 / 120 / 240	EI 30 / 60 / 90 / 120 / 180 / 240	EI 90 / 120 / 240
APPROVALS	ETA-11/0208 CR 210006105-2 CR 14318	ETA-11/0372	ETA-11/0208 CR 14027	ETA-13/0640 CR 210006105-2	ETA submitted CR 13050709-3 CR 210005902 CR 14027
SCOPE OF APPLICATIONS	COMBUSTIBLE PIPES	✓	-	✓	✓
	NON-COMBUSTIBLE PIPES	-	-	✓	-
	ELECTRICAL LINES	-	✓	-	-
	AERATIONS	-	-	-	-
MAX. PIPE OUTSIDE DIAMETER (mm)	400	125	160	160	160
APPLICATIONS IN	SOLID WALLS FROM (mm)	100	100	100	100
	DRYWALL PARTITIONS FROM (mm)	100	100	100	94
	SOLID FLOORS FROM (mm)	150	150	150	150

PENETRATION SEAL	PILLOWS	BRICKS	PLUGS
			
MFS Combined Penetration Seal	FPP Fire Protection Pillows	FPB Fire Protection Bricks	FP Plugs
EI 90 / 120	EI 90 / 120	EI 90 / 120	EI 90 / 120
ETA-15/0014 CR 210006105-2	CR 311913	ETA submitted	ETA submitted
✓	-	-	-
✓	-	-	-
✓	✓	✓	✓
-	-	-	-
wall: 2.200 x 1.100 ceiling: 1.000 x ∞	600 x 600 max. seal size	600 x 600 max. seal size	Ø 180 max. seal size
100	150	130	130
94	150	130	130
150	-	-	-

ROKU® System AWM II

Fire resistance rating:

EI 90 / 120 according to EN 13501 (U / U)

EI 180 / 240 according to EN 13501 (U / C)

Approvals:

■ Europe: ETA-11/0208, CR 210006105-2, CR 14318



Description

The ROKU® System AWM II consists of a solid metal sleeve which is equipped with several layers of the high performance intumescent material „ROKU® Strip“. In the event of a fire, the intumescent material expands with high pressure and thus seals the opening hermetically against flames and smoke. For wall installations one pipe collar on each side of the wall and for ceiling installations one collar on the underside of the ceiling must be provided.

Applications

- Sealing of plastic pipes up to max. 400 mm outside diameter in solid walls, drywall partitions and solid ceilings
- Up to Ø 160 mm also in the ROKU® System MFS Combined Penetration Seal
- Suitable for plastic pipes, mineral fibre reinforced plastics, plastic composite pipes
- Suitable for insulated and uninsulated plastic pipes and sound-isolated wastewater pipes
- Application in shaft walls $\geq 2 \times 20$ mm possible

Advantages

- Very low installation height of the collar
- Zero distance at adjacent pipes
- Easy and excellent usability
- ROKU® System AWM II could be mount in combination with other fire protection systems of the Rolf Kuhn GmbH with zero distance

Technical data

Max. Outside diameter (mm) 400

Suitable subsoils ■ Solid walls ≥ 100 mm ■ Drywall partitions ≥ 100 mm ■ Solid ceilings ≥ 150 mm

Suitable insulations ■ PE acoustic insulation ≤ 5 mm

■ ABS ■ Wavin Si Tech

■ Geberit Silent PP

■ Georg Fischer COOL-FIT

■ PE-HD

Suitable pipes

■ PP

■ POLO-KAL NG

■ POLO-KAL XS

■ PVC-U, PVC-HI, PVC-C

■ Rehau Raupiano plus

Collar dimensions (mm)	32	40	50	63	75	90	110	125	140	160	180	200	225 MAX	250 MAX	280 MAX	300 MAX	315 MAX	350 MAX	400 MAX
Pipe's inner diameter (mm)	36	44	54	67	79	94	114	129	144	165	184	204	239	264	289	314	328	364	414
Pipe's outer diameter (mm)	50	58	68	94	106	132	155	172	200	220	264	284	328	353	378	403	417	453	503
Component height (mm)	26	26	26	26	26	26,6	26,6	40	40	40	40	40	50	50	50	50	50	50	50
No. of fixing tabs (pcs)	2	2	2	4	4	4	4	4	6	6	8	8	10	10	12	12	12	12	12

Assembly instruction



The collar can be installed around unisolated and isolated pipes (for example PE acoustic insulation). All joints around the pipe have to be filled with mortar or gypsum.



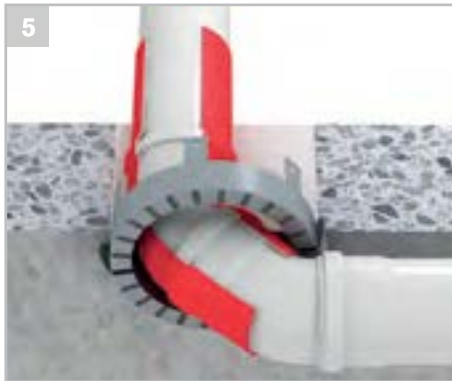
Select the right collar according to the pipe diameter.



Fix the pipe collar by the appropriate rawplugs and screws.



The Georg Fischer system COOL-FIT could be sealed with the collar AWM II in all dimensions.



The collar can also be mounted in 2 x 45 degree curves or inclined pipes with up to 3 dimension steps bigger.



The AWM II collar could be used in the ROKU® System MFS Combined Penetration Seal for plastic wastewater pipes ≤ 160 mm and for individually or grouped electrical lines.

Supplied form

Collar AWM II with the dimensions:
32, 40, 50, 63, 75, 90, 110, 125, 140, 160, 180, 200, 225, 250, 280, 300, 315, 355 and 400 mm

Accessories:
Mounting kit, Label



ROKU® System AWM II KS

Fire resistance rating:

EI 90 / 120 according to EN 13501

Approvals:

■ Europe: ETA-11/0372



Description

The ROKU® System AWM II KS for allocated or unallocated electrical lines consists of the ROKU® fire protection collar AWM II. In the event of a fire, the intumescent material expands with high pressure and thus seals the opening hermetically against flames and smoke. For wall installations one pipe collar on each side of the wall and for ceiling installations one collar on the underside of the ceiling must be provided.

Applications

- For the sealing of individual or grouped electrical lines in solid walls, drywall partitions and solid ceilings
- Up to Ø 125 mm also in the ROKU® System MFS Combined Penetration Seal

Advantages

- Easy subsequent conducting of cables
- 100 % filling of the aperture possible
- No special building materials required
- Zero distance at adjacent pipes possible
- Easy subsequent installations of the collar
- Smoke-tight sealing of the installation by means of the cartridge material ROKU® 1000 Sealant or FP Plugs

Technical data

Suitable subsoils	■ Solid walls ≥ 100 mm	■ Drywall partitions ≥ 100 mm	■ Solid ceilings ≥ 150 mm
Max. dimension electric installation pipe bundles (mm)	125		
Max. dimension single pipes (mm)	63		
Max. dimension single cables (mm)	21		
Suitable pipes	■ Polyolefine		
	■ PVC		

Assembly instruction



1 Choose pipe collar according to the single pipe or bundle. The inner diameter of the pipe collar should not be bigger than 30 mm than the single pipe or bundle.



2 Strap the single electrical lines to bundles by using an adhesive tape. Fill remaining spaces of the wall or ceiling with mortar or gypsum.



3 Fix the pipe collar by the appropriate rawplugs and screws or threaded rods, respectively. For wall installations one pipe collar on each side of the wall and for ceiling installations one collar on the underside of the ceiling must be provided.



4 For the smoke-proof finish, fill open ends of the electrical lines with e. g. ROKU® 1000 Sealant.



5 As an alternative solution for a smoke-proof sealing of the electrical lines, you may use appropriate plugs.



6 The collar AWM II could be used up to $\varnothing \leq 125$ mm in the ROKU® System MFS Combined Penetration Seal for single electrical lines or bundles.

Supplied form

Collar AWM II with the dimensions:
32, 40, 50, 63, 75, 90, 110, 125 mm

Accessories:
Mounting kit, Label



ROKU® System AWM II Light (German name: AWM III)

Fire resistance rating:

EI 90 / 120 / 240 according to EN 13501

Approvals:

■ Europe: ETA-11/0208, CR 14027



Description

The ROKU® System AWM II Light consists of a solid metal sleeve which is equipped with several layers of the high performance intumescent material „ROKU® Strip“. In the event of a fire, the intumescent material expands with high pressure and thus seals the opening hermetically against flames and smoke. For wall installations one pipe collar on each side of the wall and for ceiling installations one collar on the underside of the ceiling must be provided.

Applications

- Sealing of plastic pipes up to max. 160 mm outside diameter in solid walls, drywall partitions and solid ceilings
- Suitable for insulated and uninsulated plastic pipes and sound-isolated wastewater pipes

Advantages

- Very low installation height of the collar
- Zero distance at adjacent pipes possible
- Easy and excellent usability

Technical data

Max. Outside diameter (mm) 160

Suitable subsoils

■ Solid walls ≥ 100 mm

■ Drywall partitions ≥ 100 mm

■ Solid ceilings ≥ 150 mm

Suitable insulations

■ PE acoustic insulation from 2 to 9 mm

Suitable pipes

■ PE-HD

■ PP

■ PVC-U, PVC-HI, PVC-C

Collar dimensions (mm)	32	40	50	63	75	90	110	125	140	160
Pipe's inner diameter (mm)	38	46	56	69	81	96	122	132	144	164
Pipe's outer diameter (mm)	47	55	65	82	94	114	140	150	168	188
Component height (mm)	26	26	26	26	26	26,6	26,6	40	40	40
No. of fixing tabs (pcs)	2	2	2	4	4	4	4	4	4	4

Assembly instruction



1 The collar can be installed at pipes with and without insulation. Choose the pipe collar according to the outer diameter of the pipe/insulation.



2 All joints around the pipe have to be filled with mortar or gypsum.



3 Choose the pipe collar according to the outer diameter of the pipe or the insulation.



4 Use the fixing points to mount the collar at the wall or ceiling.



5 Fix the pipe collar by the appropriate rawlplugs and screws.



6 After that, the sealing can be signed permanently with a label.

Supplied form

Collar AWM II Light with the dimensions:
32, 40, 50, 63, 75, 90, 110, 125, 140, 160 mm

Accessories:
Mounting kit, Label



ROKU® System EC Endless Collar

Fire resistance rating:

EI 30 / 120 according to EN 13501 (U / U)

EI 180 / 240 according to EN 13501 (U / C)

Approvals:

■ Europe: ETA-13/0640, CR 210006105-2



Description

The ROKU® System EC Endless Collar consists of the high performance intumescent material „ROKU® Strip EM“ or „ROKU® Strip“ (for U / U applications), which is wrapped in one or more layers around the pipe or the insulation and fixed with a stainless steel strap and hooks at the wall or ceiling. In the event of a fire, the intumescent material expands with high pressure and thus seals the opening hermetically against flames and smoke. For wall installations one pipe collar on each side of the wall and for ceiling installations one collar on the underside of the ceiling must be provided.

Advantages

- Flexible solution for individual applications
- Very low installation height of the collar
- Zero distance at adjacent pipes possible
- One sealing serves for maximum 3 pipes side by side

Applications

- Sealing of plastic pipes up to max. 160 mm outside diameter in solid walls, drywall partitions and solid ceilings
 - Suitable for plastic pipes, mineral fibre reinforced plastics, and plastic composite pipes
 - PE acoustic insulation is possible at plastic pipes
 - Synthetic rubber insulation on plastic pipes, copper and metal pipes possible
 - Useable in combination with ROKU® FPF Fire Protection Foam (straight pipes and corner solutions)
-
- Slim collar
 - For plastic pipes in corner constructions only 2/3 of the pipe sealing may be applied
 - Delivery in a practical dispenser box

Technical data

Max. Outside diameter (mm) 160

Suitable subsoils

- Solid walls ≥ 100 mm
- Drywall partitions ≥ 94 mm
- Solid ceilings ≥ 150 mm

Suitable insulations

- PE acoustic insulation ≤ 4 mm
- Synthetic rubber insulation at plastic, steel, stainless steel or copper pipes up to max. 100 mm insulation thickness

Suitable pipes

- alpex F50 Profi / alpex L
- Coes Blue Power
- Fusiotherm Stabi composite pipes
- Geberit Silent PP
- Plastic composite pipes
- Copper, steel and stainless steel pipes
- Mineral fibre reinforced plastics
- PE-HD
- POLO-KAL NG
- PP
- PVC-U
- Rehau Raupiano Plus
- Uponor Unipipe MLC
- Valsir - TRlplus
- Wavin Si Tech

Pipe diameter (mm)	32	32	40	40	50	50	63	63	75	75	90	90	110	110	125	125	140	140	160	160
Insulation thickness (mm)	-	4	-	4	-	4	-	4	-	4	-	4	-	4	-	4	-	4	-	4
Number of layers (pcs)	2	2	2	2	2	2	3	3	3	3	4	4	4	4	5	5	6	6	6	6
Length of material (mm)	250	320	320	360	375	440	685	780	800	895	1290	1400	1545	1660	2190	2425	2860	3050	3365	3530
Metal links (pcs)	12	14	14	15	16	17	18	20	21	23	25	27	29	31	32	34	36	38	40	42
Hooks (pcs)	2	2	2	2	2	2	3	3	3	3	3	3	3	3	4	4	4	4	4	4

Selection of possible applications (exact details in the assembly instruction)

Assembly instruction / QR-Link to the assembling video:



1. The collar could be installed around insulated and uninsulated pipes. Wrap the 40 mm wide intumescent wrap with appropriate layers depending on pipe diameter around the pipe or the insulation. Through taking-off the self-adhesive protection foil the layers of the strip will be glued together.



2. Count the number of required links according to the indications of the chart. Clip the clamp in the stainless steel strap at the required length. Make sure it is flush with the strap. Bend the stainless steel strap to and fro so that it splits. No additional tool required.



3. Push the long nose of the clamp through the stainless steel strap and fix the clamp in its place by pushing the clamp and finally bending by a 90° angle.



4. Clip the clamp in its position, push the 90° bended tab through the aperture and bend again by 90° so that the clamp is fixed.



5. Bend the two noses at the end of the stainless steel strap by a 90° angle. Join the other end of the strap by pushing the bended tabs in the horizontal notches of the other side of the stainless steel strap. Finally, bend the tabs so that both ends of the strap are joined together.



6. Fix to the wall or ceiling with approved rawplugs. In dry-wall partitions and mineral fiber sealings use threaded rods M6 or M8. After that, the sealing can be signed permanently with a label.

Supplied form

Dispenser box ROKU® System EC Endless Collar:
10 m ROKU® Strip, 3 m stainless steel strap, 18 hooks, 6 labels, 1 assembly instruction

Accessories:
ROKU® FPF Fire Protection Foam for filling the joints



ROKU® System IWM III plus

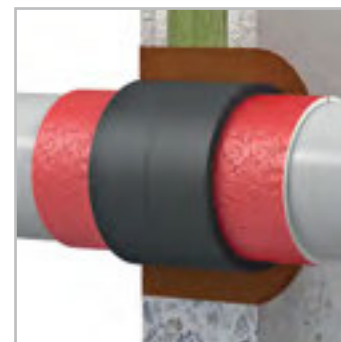
Fire resistance rating:

EI 90 / 120 according to EN 13501 (U / U)

EI 240 according to EN 13501 (U / C)

Approvals:

- Europe: ETA submitted, CR 13050709-3, CR 210005902, CR 14027



Description

The ROKU® System IWM III plus consists of the high performance intumescent material „ROKU® Strip“, which is wrapped in one or more layers around the plastic pipe or the insulation. The wrap must be inserted into the annular gap flush with the surface. In the event of a fire, the intumescent material expands with high pressure and thus seals the opening hermetically against flames and smoke. For wall installations one wrap on each side of the wall and for ceiling installations one wrap on the underside of the ceiling must be provided.

Applications

- Sealing of plastic pipes up to max. 160 mm outside diameter in solid walls, max. 110 mm outside diameter in drywall partitions and max. 160 mm outside diameter in solid ceilings
- Suitable for insulated and uninsulated plastic pipes, sound-insulated wastewater pipes and multi-layer pipes

Advantages

- Only one product for a wide range of pipes
- Zero distance at adjacent pipes possible (Measurement between the wraps possible)
- Easy and excellent usability
- Flexibel and easy installation
- No tools necessary
- ROKU® System IWM III could be mount in combination with other fire protection systems of the Rolf Kuhn GmbH with zero distance

Technical data

Max. Outside diameter (mm) 160

Suitable subsoils ■ Solid walls ≥ 100 mm ■ Drywall partitions ≥ 100 mm ■ Solid ceilings ≥ 150 mm

Suitable insulations ■ PE acoustic insulation ≤ 5 mm

Suitable pipes ■ Alpex Duo ■ Unipipe
 ■ Conel Drain ■ Wavin Si Tech
 ■ Fusiotherm
 ■ Silent PP

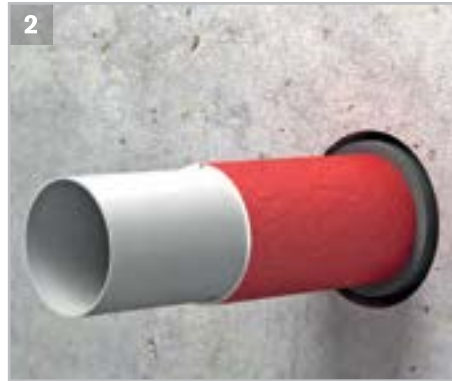
Suitable pipes ■ PE-HD
 ■ PP
 ■ POLO-KAL NG
 ■ PVC-U, PVC-HI, PVC-C
 ■ Rehau Raupiano plus

Pipe diameter (mm)	32	40	50	63	75	90	110	125	140	160
Number of layers at uninsulated pipes (pcs)	2	2	2	3	3	3	3	6	6	6
Number of layers at PE insulated pipes (pcs)	2 / 3	2 / 3	2 / 3	3	3	3	3	-	-	-
Number of layers at acoustic insulation pipes (pcs)	2	2	2	5	5	5	5	-	-	-
Number of layers at with synthetic rubber insulated pipes (pcs)	3	3	3	3	3	3	3	-	-	-

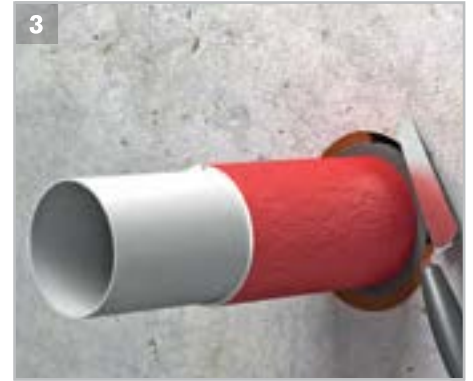
Assembly instruction



1 The intumescent material can be installed on uninsulated or insulated pipes.



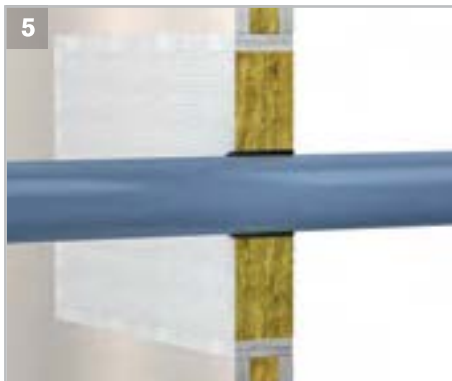
2 Adhere the single layers through removing the protection foil. Fix the last layer of the not self-adhesive variant with adhesive tape.



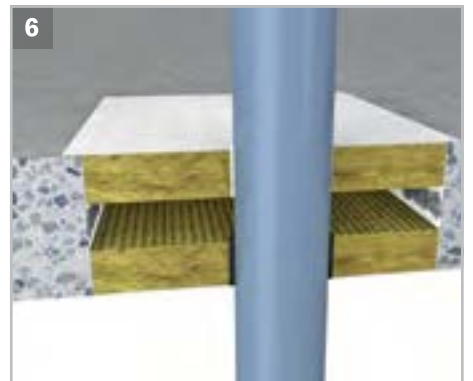
3 Wrap the intumescent material around the pipe. The required number of layers can be read out of the table.



4 The wrap must be inserted into the annular gap flush with the surface. All joints around the wrap have to be filled with mortar or gypsum.



5 You can use the wrap also in the mineral fibre panel ROKU® MFS for combustible pipes in walls.



6 Also suitable in combination with the mineral fibre panel in ceilings.

Supplied form

Wrap ROKU® Strip with the dimension:
12.500 mm x 50 mm x 2 mm

Variants: self-adhesive / not self-adhesive incl. adhesive strip

Accessories:
Label



ROKU® System MFS Combined Penetration Seal

Fire resistance rating:

EI 90 / 120 according to EN 13501

Approvals:

Europe: ETA-15/0014, CR 210006105



Description

The ROKU® System MFS Combined Penetration Seal consists of the high performance coating ROKU® MFC 100 and two coated ROKU® MFP mineral fibre panels. Plastic pipes are sealed with the ROKU® AWM II collar. The insulation of copper pipes with synthetic rubber insulation or metal pipes with mineral wool insulation is covered with ROKU® Strip (Thickness 1,5 mm, Width 100 mm). Cables or electrical lines are covered with ROKU® MFC 100 ablation coating on both sides of the sealing at a length of at least 15 cm and a thickness of 1 mm.

Applications

- Sealing of electrical lines up to max. 80 mm diameter in solid walls, drywall partitions and solid ceilings
- Sealing of electric installation pipes with and without cables up to max. 63 mm single diameter or 125 mm bundle diameter
- Sealing of combustible wastewater pipes (PE, PP, PVC) up to ≤ 160 mm
- Copper pipes insulated with synthetic rubber up to max. $\varnothing 88,9$ mm
- Metal pipes up to 160 mm insulated with mineral wool (Thickness 20 to 50 mm)

Advantages

- Fire protection coating ROKU® MFC 100 is suitable for the application in wet and humid areas
- Insensitive to frost: mode of action and coating are not affected
- Easy installation and subsequent installation
- High flexibility

Technical data

Suitable subsoils	<ul style="list-style-type: none"> ■ Solid walls ≥ 100 mm ■ Drywall partitions ≥ 94 mm ■ Solid ceilings ≥ 150 mm
Suitable insulations	<ul style="list-style-type: none"> ■ Synthetic rubber with 11 up to max. 41,5 mm insulation thickness ■ Mineral wool or stone wool with 20 up to max. 50 mm insulation thickness
Suitable pipes	<ul style="list-style-type: none"> ■ PVC, PP and PE (up to max. $\varnothing 160$ mm and pipe wall thickness from 1,8 to 14,6 mm) ■ Copper pipes up to max. $\varnothing 88,9$ mm ■ Metal pipes up to max. $\varnothing 160$ mm ■ Electric installation pipes made of PVC or Polyolefine with max. single diameter 63 mm or bundles from max. 125 mm diameter
Max. Seal size	<ul style="list-style-type: none"> ■ Wall: 2.200 x 1.100 mm ■ Floor: 1.000 mm width x ∞ length

Collar dimensions (mm)	32	40	50	63	75	90	110	125	140	160
Pipe's inner diameter (mm)	36	44	54	67	79	94	114	129	144	164
Pipe's outer diameter (mm)	50	58	68	94	106	132	155	172	200	220
Component height (mm)	26,0	26,0	26,0	26,0	26,0	26,6	26,6	40	40	40
No. of fixing tabs (pcs)	2	2	2	4	4	4	4	4	6	6

Dimensions of the AWM II collar

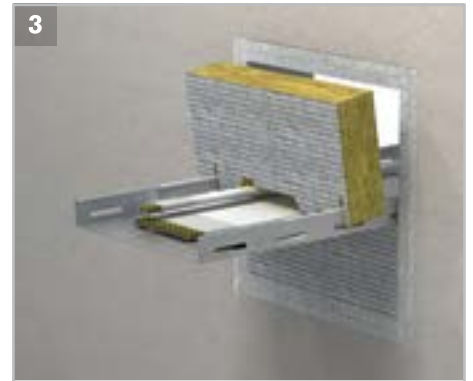
Assembly instruction



1 Clean aperture and remove all loose parts. Cover the surface of the aperture with ROKU® MFC 100 coating.



2 Coat cables and cable trays with ROKU® MFC 100 and adjust ROKU® MFP mineral fibre panels on both sides of the wall/ceiling.



3 Fill the aperture completely and fill remaining spaces with mineral wool previously immersed in coating.



4 Mask the aperture 2 cm bigger than the aperture size, fill all remaining spaces with ROKU® MFC 100 coating.



5 Coat the complete surface inside the mask with ROKU® MFC 100 to a total thickness of at least 1 mm.



6 Tear off the adhesive tapes and apply the label.

Supplied form

ROKU® System MFS Combined Penetration Seal:

Collar AWM II in the dimensions 32, 40, 50, 63, 75, 90, 110, 125, 140, 160 mm;
 Wrap ROKU® Strip 10.000 x 100 x 1,5 mm self-adhesive / not self-adhesive, Coating ROKU® MFC 100 6 kg or 12,5 kg bucket; Coated mineral fibre panel ROKU® MFP 1.000 x 625 x 50 mm.

Accessories:

Label



ROKU® System FPP Fire Protection Pillows

Fire resistance rating:

EI 90 / 120 according to EN 13501

Approvals:

■ Europe: CR 311913



Description

The ROKU® System FPP Fire Protection Pillows is designed for the sealing of cables and electric lines up to 80 mm diameter. The system features a low effort in mounting. The ROKU® System FPP is suitable for permanent and temporary sealing. They may be applied repeatedly without losing their technical properties.

Applications

- Sealing of cables and electrical lines up to 80 mm single diameter in solid walls
- Especially designed for EDP rooms because of an dust- and fibre-free material

Advantages

- Absolute dust- and fibre-free processing
- Easy installation and subsequent installation
- High flexibility
- Easy and excellent usability

Technical data

Suitable subsoils

- Solid walls

Max. Seal size (mm)

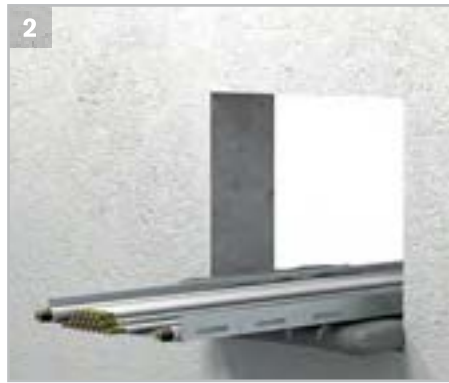
600 x 600

Dimension of the aperture	0,1 m ²		0,2 m ²		0,3 m ²		0,4 m ²	
	M	XL	M	XL	M	XL	M	XL
Size of the pillow								
Number of cables 10 %	3	12	6	24	9	36	12	48
Number of cables 20 %	2	11	4	22	6	33	8	44
Number of cables 30 %	2	10	4	20	6	30	8	40
Number of cables 60 %	2	9	4	18	6	27	8	36

Assembly instruction



1
Clean the aperture and remove all loose parts. Check the correct installation of the cable rack on wall and ceiling which should be fixed by at least 25 cm after leaving the surface on the ceiling or wall.



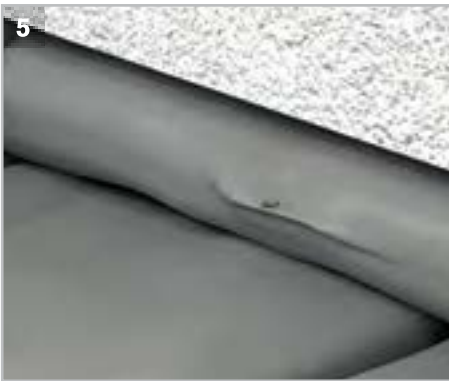
2
If possible, provide one layer of pillows underneath the cable bundle or cable rack.



3
Stuff all other layers of fire protection pillows very tightly around the cables. For that purpose the use of pillows in different sizes is recommended.



4
Make sure to stuff the fire protection pillows in a staggered pattern.



5
Press slightly on the fire protection pillows and shove into the sealing. The fire protection pillows are provided with a tab on one of the long sides.



6
By using a wire or a string, the last fire protection pillow may be drawn through and thus seals the aperture.

Supplied form

FPP Fire Protection Pillows with the dimensions:

- Size S: 305 x 60 x 15 mm
- Size M: 305 x 105 x 25 mm
- Size L: 305 x 155 x 25 mm
- Size XL: 305 x 210 x 25 mm

Accessories:

Label



ROKU® System FPB Fire Protection Bricks

Fire resistance rating:

EI 90 / 120 according to EN 13501

Approvals:

■ Europe: ETA submitted



Description

The ROKU® System FPB consists of elastic fire protection bricks which are suitable for a cable sealing up to max. 600 x 600 mm. The shell construction opening could be insert cables or electrical lines up to max. 80 mm single diameter, which are put through the sealing single, in bundles or by a cable rack. Also electric installation pipes up to max. Ø 20 mm consisting of PVC, polyolefinse or steel could pass through the sealing. For small spaces the cartridge material ROKU® FL Sealant can be used.

Applications

- Sealing of cables and electrical lines in solid walls and dry-wall partitions ≥ 130 mm
- Max. Seal size 600 x 600 mm with and without cable rack, which can be proved with cables up to max. 80 mm single diameter
- Cable bundle up to max. Ø 100 mm at max. single cable diameter 21 mm
- Electric installation pipes consisting of PVC, polyolefins or of steel up to $\text{Ø} \leq 20$ mm

Advantages

- Absolute dust- and fibre-free processing
- Easy cutting of the fire protection bricks
- High flexibility

Technical data

Suitable subsoils	■ Solid walls ≥ 130 mm	■ Drywall partitions ≥ 130 mm
Max. Seal size (mm)	600 x 600	
Seal thickness (mm)	160	
Diameter cable bundle (mm)	Max. 100	
Diameter single cable (mm)	Max. 80	

Seal area	40 %	60 %
0,01 m ²	1 pcs	0,5 pcs
0,05 m ²	4 pcs	3,5 pcs
0,10 m ²	8 pcs	5 pcs
0,20 m ²	15,5 pcs	10,5 pcs
0,30 m ²	22 pcs	15 pcs

Pieces of bricks: standard values at 40 % and 60 % occupancy rate of the sealing

Assembly instruction



1 Clean the aperture and remove all loose parts.



2 Insert the bricks with the long side (160 mm) onwards into the opening.



3 Cut out the bricks in such a way, that they lie closely to the cable rack or cables.



4 Coat the cables in the opening at a length of min. 10 cm with ROKU® FL Sealant and apply or cut additional bricks.



5 After the insertion of the bricks close all joints with ROKU® FL Sealant.

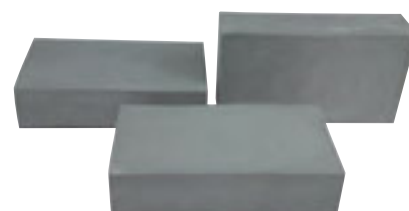


6 Check the sealing and apply the label.

Supplied form

FPB Fire Protection Bricks with the dimension:
160 x 130 x 60 mm

Accessories:
Label



ROKU® System FP Plugs

Fire resistance rating:

EI 90 / 120 according to EN 13501

Approvals:

■ Europe: ETA submitted



Description

The ROKU® System FP consists of the same elastic material as the ROKU® FPB Fire Protection Bricks. The FP Plugs are suitable for core drillings up to max. 180 mm. Core drillings should be sealed in front and back with a fire protection plug.

Applications

- Sealing of cables and electrical lines in solid walls and dry-wall partitions ≥ 130 mm
- Max. Seal size $\varnothing 180$ mm, which can be proved with cables up to max. 21 mm single diameter
- Cable bundle up to max. $\varnothing 50$ mm at max. single cable diameter 21 mm
- Electric installation pipes consisting of PVC, polyolefins or of steel up to $\varnothing \leq 20$ mm

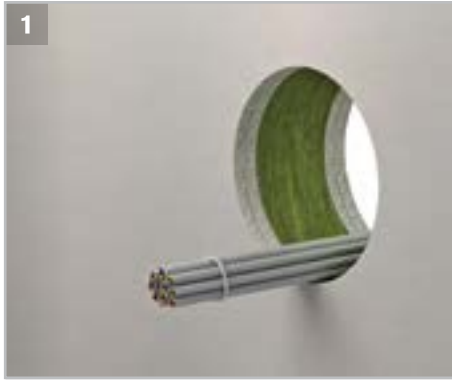
Advantages

- Absolute dust- and fibre-free processing
- Easy cutting of the fire protection plugs
- High flexibility

Technical data

Suitable subsoils	■ Solid walls ≥ 130 mm	■ Drywall partitions ≥ 130 mm
Max. Seal size (mm)	$\varnothing 180$	
Seal thickness (mm)	130	
Diameter cable bundle (mm)	Max. 50	
Diameter single cable (mm)	Max. 21	

Assembly instruction



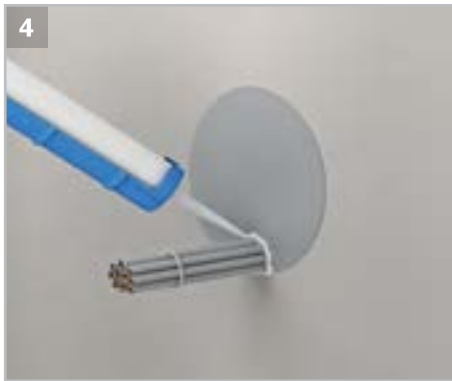
1 Clean the aperture and remove all loose parts.



2 Cut out the plug in such a way, that they lie closely to the cables.



3 Fit the plug into the opening.



4 Close all joints with ROKU® FL Sealant.



5 Check the sealing.



6 Finally apply the label.

Supplied form



FP Plugs with the dimensions:
62, 70, 76, 104, 129, 154, 182 mm

Accessories:
Label



TYPE OF PRODUCT	COLLARS						FOAM	
SYSTEMS								
ROKU® SYSTEM	AWM II		AWM II KS		AWM II Light (AWM III)		EC Endless Collar	EC Endless Collar
PRODUCT/S	AWM II Fire protection collar		AWM II Fire protection collar		AWM II Light Fire protection collar		Dispenser box: 10 m ROKU® Strip, 3 m stainless steel strap, 18 hooks, 6 labels, 1 assembly instruction	ROKU® FFP Fire protection foam
DIMENSION/ ARTICLE-NO.	32	0705000320	32	0705000320	32	0705300320	Dispenser box (see above) 0303209011 <i>Single article for reorder:</i> 10 m ROKU® Strip 0303209081 3 m stainless steel strap 0707002101 18 hooks 0707002100 1 labels 0750050060	180 g cartridge 0726000000 480 g cartridge 0726000001
	40	0705000400	40	0705000400	40	0705300400		
	50	0705000500	50	0705000500	50	0705300500		
	63	0705000630	63	0705000630	63	0705300630		
	75	0705000750	75	0705000750	75	0705300750		
	90	0705000900	90	0705000900	90	0705300900		
	110	0705001100	110	0705001100	110	0705301100		
	125	0705001250	125	0705001250	125	0705301250		
	140	0705001400			140	0705301400		
	160	0705001600			160	0705301600		
	180	0705001800			180	0705301800		
	200	0705002000						
	225	0705002250						
	250	0705002500						
	280	0705002800						
	300	0705003000						
	315	0705003150						
	355	0705003550						
	400	0705004000						
ACCESSORIES	<ul style="list-style-type: none"> ■ Mounting kit ■ Label 		<ul style="list-style-type: none"> ■ Mounting kit ■ Label 		<ul style="list-style-type: none"> ■ Mounting kit ■ Label 		<ul style="list-style-type: none"> ■ ROKU® FFP Fire Protection Foam 	<ul style="list-style-type: none"> ■ Label

WRAP	PENETRATION SEAL			PILLOWS
				
<p>IWM III plus</p>	<p>MFS Combined Penetration Seal</p>	<p>MFS Combined Penetration Seal</p>	<p>MFS Combined Penetration Seal</p>	<p>FPP Fire Protection Pillows</p>
<p>ROKU® Strip Fire protection wrap</p>	<p>ROKU® MFC 100 Fire protection coating Airless version</p>	<p>ROKU® MFC 100 Fire protection coating Thick version</p>	<p>ROKU® MFP Mineral fibre panel</p>	<p>ROKU® FPP Fire protection pillows</p>
<p>12.500 x 50 x 2 mm self-adhesive 0303209060</p> <p>12.500 x 50 x 2 mm not self-adhesive incl. adhesive strip 0303209000</p>	<p>6 kg bucket 0720000100</p> <p>12,5 kg bucket 0720000101</p>	<p>300 ml cartridge 0721000102</p> <p>6 kg bucket 0721000105</p> <p>12,5 kg bucket 0721000101</p>	<p>1.000 x 625 x 50 mm 0722000000</p>	<p>Size S 305 x 60 x 15 mm 0708000000</p> <p>Size M 305 x 105 x 25 mm 0708000001</p> <p>Size L 305 x 155 x 25 mm 0708000011</p> <p>Size XL 305 x 210 x 25 mm 0708000003</p>
<p>■ Label</p>	<p>■ Label</p>	<p>■ Label</p>	<p>■ Label</p>	<p>■ Label</p>

TYPE OF PRODUCT	BRICKS	PLUGS	
SYSTEMS			
ROKU® SYSTEM	FPB Fire Protection Bricks	FP Plugs	
PRODUCT/S	FPB Fire protection bricks	FP plugs	
DIMENSION/ ARTICLE-NO.	160 x 130 x 60 mm 0710001004	62 70 76 104 129 154 182	0709001012 0709001010 0709001006 0709001007 0709001011 0709001008 0709001009
	<i>Accessories:</i> ROKU® FL Sealant 0729000001	<i>Accessories:</i> ROKU® FL Sealant 0729000001	
ACCESSORIES	■ Label	■ Label	



You can scan this brochure by using the QR-Code above as well as download it on our homepage www.kuhn-brandschutz.com.

INSTRUCTION QR-CODE:

Scan the QR-Code with the help of a QR-Code scanner on your smartphone and open the link. The brochure will be open automatically on your smartphone.

ROLFKUHNGMBH

PASSIVER TECHNISCHER BRANDSCHUTZ

Rolf Kuhn GmbH / Headquarter

Jägersgrund 10
57339 Erndtebrück / Germany
Access by „Auf der Roten Wiese“

Fon: +49 2753 5945-0
Fax: +49 2753 5945-21
info@rolfkuhngmbh.com
www.kuhn-brandschutz.com

Location Leverkusen:

Rolf Kuhn GmbH
Manforter Straße 221
51373 Leverkusen / Germany

Location Tutzing:

Rolf Kuhn GmbH
Bahnhofstraße 12
82327 Tutzing / Germany

Direct-Order:

Fax: +49 2753 5945-52
sales@rolfkuhngmbh.com

Technical Service-Hotline:

Fon: +49 2753 5945-66
technik@kuhn-brandschutz.com

